



FUNCTION WITH STYLE



Quality meets comfort and style

## Function meets Quality

Established in 1982, Cello Wimplast has since then been the leading manufacturer and supplier for high quality reinforced compounds. Understanding the consumer needs and the importance of providing durable products in the market the company entered into the business of manufacturing superior molded furniture in 1994.

Today with over 40 years of combined experience in the plastic and furniture industry it has become one of the trusted brands not only in India but also globally. On a national platform with its unique range of aesthetically superior molded furniture equipment both for household and outdoor use it has also been one of the leading names in the Molded Furniture segment.

With time the company has expanded its collection of furniture products like Chairs, Tables, Storage solutions, Kid's collection, Premium collection and the list is endless that suits your everyday needs. Besides foraying into the furniture category, the company has also taken up the cause of keeping your city clean by introducing a wide range of Waste Management products both for commercial and domestic needs. In order to manufacture in bulk, the company has set up factories across India followed with a strong distribution network thereby, making their presence felt in all four regions of the country.

Over the years the company has only believed in providing high quality durable products and has been successful in winning the consumers priciest possession - their TRUST! So, next time when you are planning to decorate your house or if you want to keep your city clean always remember there will be just one thought, one name that has been with you and will continue to be with you. CELLO. Your one stop solution to all your needs. Your companion for life.





# LIFESTYLE COLLECTION



## CHEER

H: 865, W: 445, D: 545





## ABACUS

H: 820, W: 595, D: 590



## FLORIDA

H: 820, W: 595, D: 590



## OPTIMA

H: 555, W: 570, D: 860







## ECSTASY

H: 890, W: 605, D: 570



## ELEGANZA

H: 890, W: 605, D: 570



## GLOBUS

H: 660, W: 666, D: 722





**LOUNGE**

H: 665, W: 770, D: 710



**VINCA**

H: 770, W: 470, D: 570



**ATRIA**

H: 776, W: 515, D: 575



**DELLA**

H: 895, W: 560, D: 550



**ANTILIA**

H: 900, W: 560, D: 535





Width Depth Height



**EGO  
CLASSIC**

H: 830, W: 515, D: 500



**EGO ELITE**

H: 865, W: 440, D: 500



**ESKIMO**

H: 810, W: 470, D: 500

SEAT  
FRAME



## CLUB CLASS

H: 905, W: 410, D: 450

SEAT  
FRAME



## TRENDZ OXO

H: 894, W: 415, D: 480



## MIRACLE

H: 858, W: 445, D: 555

# RATTAN





**KRAZE**

H: 585, W: 587, D: 820



**KRAFT**  
WITH ARM

H: 885, W: 545, D: 495



**KRAFT**  
WITHOUT ARM

H: 885, W: 440, D: 495



# COMFORT COLLECTION







### MIRACLE DELUX

H: 858, W: 445, D: 555



### PERFECT SUPER DELUX

H: 850, W: 560, D: 540



### DECENT DELUX

H: 872, W: 403, D: 510



### DECENT

H: 872, W: 403, D: 510

# PREMIUM COLLECTION



**JORDAN**

H: 886 W: 595, D: 615



**ULTRA**

H: 910, W: 570, D: 635



**PROMINENT**

H: 867, W: 543, D: 605



**PROSPECT**

H: 867, W: 543, D: 605



**ENDURA**

H: 910, W: 570, D: 635



**SAGA**

H: 910, W: 570, D: 635



**PLAZA  
MATT**

H: 865, W: 570, D: 600



**GARNET  
MATT**

H: 865, W: 570, D: 600



**CONTINENTAL**

H: 775 W: 565, D: 410



**AMAZON**

H: 775, W: 565, D: 410



**CRISIL**

H: 775 W: 565, D: 410



**LEISURE**

H: 810, W: 545, D: 480



**GLAMOUR**

H: 810, W: 545 D: 480



**STERLING**

H: 810, W: 545, D: 480



**IDEAL**

H: 867, W: 543, D: 605



**IMPACT**

H: 867, W: 543, D: 605



**LENOVA**

H: 870, W: 550 D: 600



**LUMINA**

H: 870, W: 550, D: 600



**LAUREL**

H: 870, W: 550, D: 600



**COMFORT**

H: 885, W: 575, D: 850



**ROYCE**

H: 893 W: 620, D: 670



**RANGER**

H: 893, W: 620, D: 670



**CORONET**

H: 893, W: 605 D: 685



**FAVOURITE**

H: 815, W: 528, D: 650



**DESIGNER**

H: 805, W: 533 D: 640



**TITAN**

H: 805, W: 533 D: 640



**ACME**

H: 885, W: 595, D: 650



**ZENITH**

H: 885, W: 595, D: 650



**RUBY**

H: 885, W: 595, D: 650



**COMMANDER**

H: 890, W: 504, D: 585



**ARISTO**

H: 890, W: 504, D: 585



**COMRADE**

H: 890, W: 504, D: 585

# NEW INTRODUCTION



**Plazo**

H: 810, W: 584, D: 570



**Triangle**

H: 810, W: 584, D: 570



**Oxford**

H: 810, W: 587, D: 570





**Twinkle**

H: 800 W: 608, D: 580



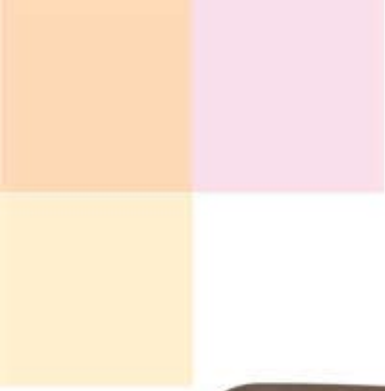
**Blocks**

H: 800 W: 608, D: 580



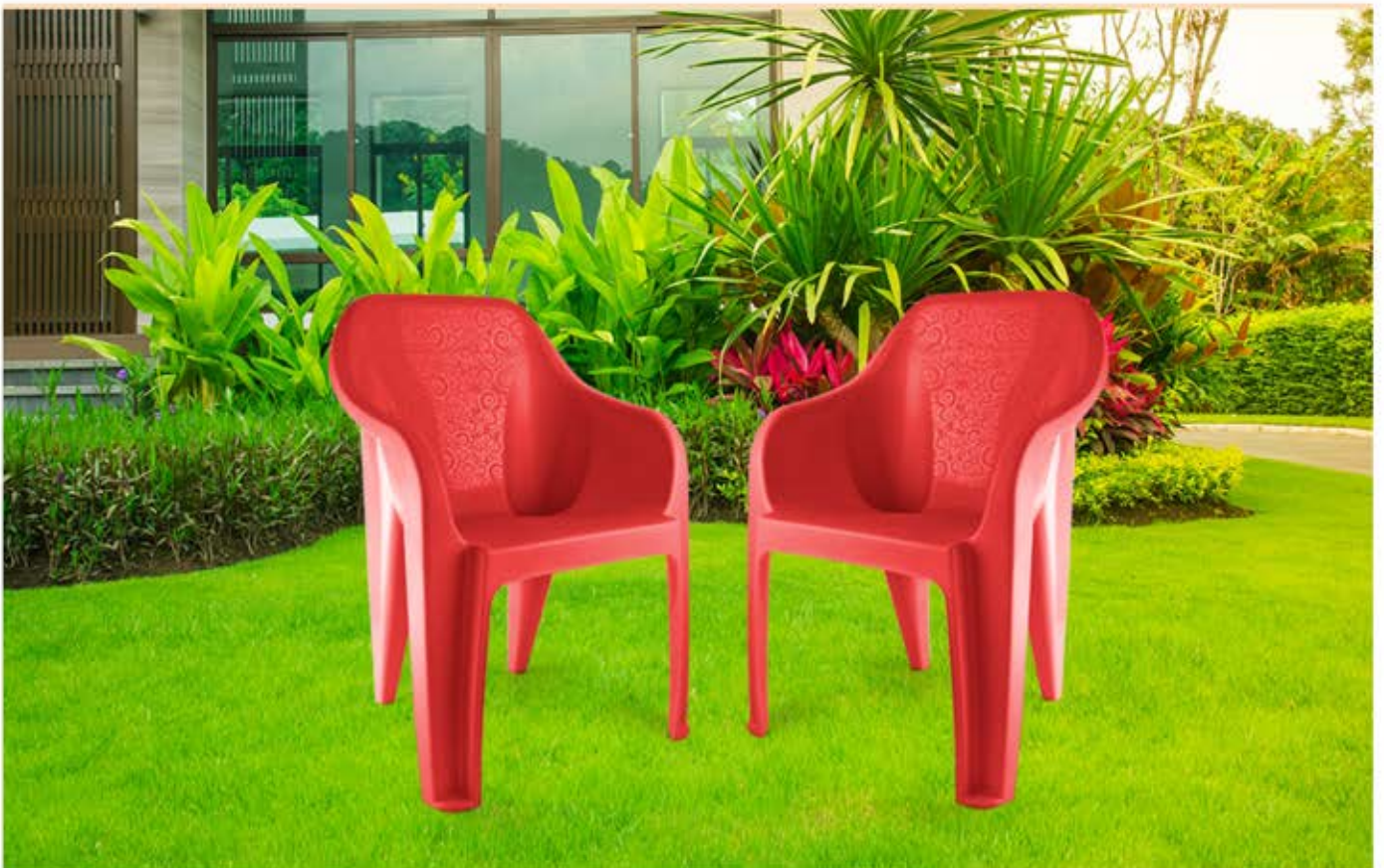
**Couch**

H: 635 W: 700, D: 725



## Dynamo

H: 805, W: 575, D: 550





**Siesta**

H: 795, W: 575, D: 585



**Sigma**

H: 800, W: 600, D: 550





**ADMIRE**

H: 795, W: 575, D: 620



**PRIME**

H: 795, W: 575, D: 620



**MAXIMA**

H: 795, W: 575, D: 620



**LIBERTY**

H: 795, W: 575, D: 620



**UNIQUE**

H: 795, W: 575, D: 620



**PALM**

H: 795, W: 575, D: 620



**INDIANA**

H: 793, W: 560 D: 610



**COMET**

H: 798, W: 540, D: 605



**MAGNET**

H: 798, W: 540, D: 605



**CORONA**

H: 798, W: 540 D: 605



**CHANCELLOR**

H: 812, W: 540, D: 437



**DYNASTY**

H: 813, W: 559, D: 432



**ENVY**

H: 825, W: 565, D: 525



**LOOP**

H: 825, W: 565, D: 525



**MERIT**

H: 825, W: 565, D: 525



**NEXUS**

H: 792, W: 610, D: 530



**NUCLEUS**

H: 792, W: 610, D: 530



**CETRA**

H: 792, W: 610, D: 530



**FLORET**

H: 792W: 610, D: 530



**NEW BLOSSOM**

H: 740,W: 512, D: 540



**STYLO**

H: 765,W: 492 D: 525



**DUNCAN**

H: 765,W: 492 D: 525



**DOLBY**

H: 770,W: 510, D: 445



**DAZZLE**

H: 770,W: 510, D: 445

# STOOLS



**RHINO**  
H: 435, Dia: 368



**SAMURAI**  
H: 457, Dia: 435





**BISTRO**

H: 470, W: 384, D: 384



**OSTRICH**

H: 528, W: 375, D: 455



**TWISTER**

H: 465, W: 380, D: 380



**SUMO**

H: 490, W: 430, D: 430



**LUNA**

H: 532, W: 410, D: 410



**ACUTOUCH**

H: 485, W: 350, D: 350



**TANGENT**

H: 580, W: 400, D: 415



**HIPPO**

H: 460, W: 400, D: 400



**BETA**

H: 472 W: 337, D: 400



**DOLCY**

H: 465, W: 345, D: 363



**CORAL**

H: 450 W: 365 D: 450



**INSTA**

H: 278, W: 305, D: 305



**TANGO  
TINY**

H: 330, W: 350, D: 350



**TANGO  
TEEN**

H: 445, W: 375, D: 375



**FIESTA**

H: 320, W: 345, D: 345



**STEPPY**

H: 330, W: 400, D: 465



**STAIR**

H: 635, W: 480, D: 665



**HUSKY**

H: 450, W: 380, D: 395



**CROMA  
DELUXE**

H: 770, W: 750, L: 750

**DINING TABLES**



**AMAZE**

H: 730, W: 700, L: 700



**EDEN**

H: 730, W: 700, L: 700



**PRESTO**

H: 710, Dia: 920



**SENATOR**

H: 710 W: 706 L: 1135



**MEGA  
SENATOR**

H: 710, W: 840, L: 1350



## PROLINE

H: 710 ,W: 706, L: 1135



## MEGA PROLINE

H: 710,W: 840, L: 1350



## MAGNA

H: 735,W: 695, L: 1135



**ESQUIRE**

H: 710, W: 850, L: 850



**PRUDENT**

H: 725, Dia: 920



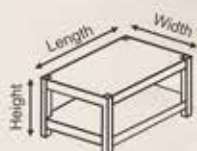
**PROMPT**

H: 715, Dia: 740

# CENTRE TABLES

## AWESOME RATTAN TABLE

H: 460, W: 895, D : 595



## OASIS

H: 445, W: 455, L: 805,



## ORNATE

H: 485, Dia: 700







**ORCHID**

H: 505, W: 340, L : 560



**COROLLA**

H: 490, Dia : 590



**OPERA**

H: 483, W: 534, L: 762



**OPTRA**

H: 470, W: 590, L: 610



**OSCAR**

H: 505 W: 435, L: 815



**OMINI**

H: 820, W: 445, L: 820



## ODYSSEY +

H: 405, W: 480, L: 690



## ODYSSEY RATTAN

H: 405, W: 480, L: 690



## ODYSSEY RATTAN BIG

H: 455, W: 480, L: 690



**ODYSSEY  
BIG**

H: 455, W: 480, L: 690



**OCEAN**

H: 405, W: 480, L: 690



**OCEAN BIG**

H: 455 W: 480, L: 690



# HORECA COLLECTION





### LYRA

H: 865, W: 495, D: 505



### MONARCH

H: 865, W: 495, D: 505



### NOBLE

H: 865, W: 495, D: 505



### OREON

H: 865, W: 495, D: 505



### CAPRI

H: 792 W: 538, D: 545



### AROMA

H: 767 W: 565, D: 525



**POLKA**

H: 875, W: 495, D: 495



**ARC**

H: 875, W: 495, D: 495





**DICE**

H: 780, W: 410, D: 520



**DOME**

H: 780, W: 410, D: 520



**STREAM**

H: 875, W: 495, D: 495



**VERSA**

H: 875, W: 495, D: 495



**OVILA**

H: 875, W: 495, D: 495



**SUNNY**

H: 875, W: 495, D: 495





### PARAGON

H: 870, W: 450, D: 510



### SLEEK

H: 870, W: 450, D: 510



### FEVINA

H: 847, W: 410, D: 585



### AURINA

H: 847, W: 410, D: 585



### FAME

H: 800, W: 390, D: 600



### FUSION

H: 800, W: 390, D: 600

# CAFETERIA COLLECTION











## XYLO

H: 800, W: 530, D: 590



## METALLO

H: 740, W: 500, D: 535



## FLAMINGO

H: 775, W: 520, D: 570



## DELTA

H: 775, W: 520, D: 570



## MILANO

H: 832 W: 485, D: 600



## CROMA DELUX DINNING

H: 770, W: 750, D: 750



## EVA STOOL

H: 375, Dia: 315



## IRIS STOOL

H: 450, W: 320, D: 320

# KIDS COLLECTION

*For our little star ...*







**ROCK**

H: 710, W: 470, D: 500



**BOLT**

H: 492, W: 350, D: 395



**HARRY**

H: 545, W: 370, D: 285



**DICK**

H: 555, W: 370, D: 280



**BINGO**

H: 550, W: 392, D: 560



**COMFY**

H: 550, W: 392, D: 560



**ENJOY**

H: 550, W: 392, D: 560



**VOLVO**

H: 485, W: 510, D: 435



**MURPHY**

H: 575, W: 390, D: 370



**TODDLER  
INFANT**

H: 890, W: 580, D: 640



**NEW  
TULIP**

H: 543, W: 385, D: 300



**AQUA**

H: 592, W: 408, D: 340



**TEDDY**

H: 592, W: 408, D: 340



**SCHOLAR  
PRIME  
STUDY TABLE**

H: 500, W: 395, L: 525



**SCHOLAR  
JUNIOR  
BABY  
TOYTABLE**

H: 280, W: 387, L: 510



**SCHOLAR  
SENIOR  
BABY  
TOYTABLE**

H: 450, W: 387, L: 510



**SCHOLAR  
JUNIOR+  
BABY  
TOYTABLE**

H: 280, W: 387, L: 525



**SCHOLAR  
SENIOR+  
BABY  
TOYTABLE**

H: 450, W: 387, L: 525

With shelf and bottle holder  
 Simple installation  
 Highly durable  
 Easy to clean and maintain  
 Termite and water proof  
 With MS Metal Stand  
 Recyclable  
 Available in vibrant colours  
 Ideal for upto 15 years



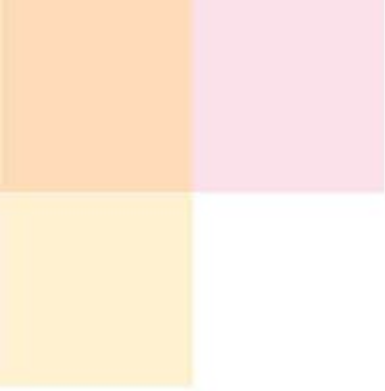
## MONITOR STUDENT DESK

MONITOR TYPES	A			B			C			D		
	L	W	H	L	W	H	L	W	H	L	W	H
OVERALL SIZE (in mm)	840	650	604	840	790	626	840	790	690	910	866	755
TOP	840	250	35	840	355	35	840	355	35	910	355	35
SEAT	840	250	35	840	250	35	840	250	35	910	300	35
BACK REST	840	250	35	840	250	35	840	250	35	910	300	35



**Smart Furniture  
For Smarter Kids**





**SCHOOLMATE  
SINGLE  
STUDENT DESK**

H: 750, W: 450, L: 595



**SCHOOLMATE  
DOUBLE  
STUDENT DESK**

H: 750, W: 450, L: 1200



**KINDER  
FLOOR  
SITTING DESK**

H: 210, W: 414, L: 928







**NOVELTY  
COMPACT  
MOWGLI**

H: 636, W: 593, D: 370



**NOVELTY  
BIG  
MOWGLI**

H: 1225, W: 593, D: 370



**NOVELTY  
COMPACT  
FAIRY**

H: 636, W: 593, D: 370



**NOVELTY  
BIG  
FAIRY**

H: 1225, W: 593, D: 370



**NOVELTY  
COMPACT  
RACER**

H: 636, W: 593, D: 370



**NOVELTY  
BIG  
RACER**

H: 1225, W: 593, D: 370



# Infiniti

*your space, your way.*





## INFINITI MEDIUM

H: 858, W: 780, D: 420 MM



## INFINITI LARGE

H: 1250, W: 780, D: 420



## INFINITI EXTRA LARGE

H: 1643, W: 780, D: 420 MM



## INFINITI SMALL

H: 463, W : 780, D: 420



## INFINITI MINI I

H: 463, W: 390, D: 420



## INFINITI MINI II

H: 855, W: 390, D: 420



## INFINITI MINI II COMBI

H: 855, W: 390, D: 420



## INFINITI MINI III

H: 1250, W: 390, D: 420



## INFINITI MINI III COMBI

H: 1250, W: 390, D: 420



**Infinity**   
MODULAR SYSTEMS

## easy assembly

modular units  
that can be mixed and matched  
to your space and needs.

## easy add-ons

1,2,3 unit modules  
to fit into and grow up to  
any new uses and spaces.

## easy care

water resistant  
furniture that can be  
long lasting  
Halls, Kitchens, Bedrooms,  
Bathrooms & stain resistant  
furniture that can take  
the occasional spill.

[www.celloinfinity.com](http://www.celloinfinity.com)





## INFINITI MINI IV

H : 1642, W: 390, D: 420



## INFINITI SHOE RACK MINI III

H : 1250, W: 390, D: 420



## INFINITI SHOE RACK MINI IV

H : 1642, W: 390, D: 420



## INFINITI SHOE RACK MEDIUM

H: 858, W: 780, D: 420



## INFINITI DRAWER MEDIUM

H: 858, W: 780, D: 420





## INFINITI DRAWER MINI II

H: 463, W: 390, D: 420



## INFINITI EXTRA LARGE COMBI

H: 1643, W: 780, D: 420



## INFINITI LARGE RACK

H: 1643, W: 780, D: 420



# STORAGE COLLECTION





## NOVELTY COMPACT

H: 636 W: 593, D: 370

## NOVELTY BIG

H: 1225, W: 593, D: 370



## NOVELTY LARGE

H: 1815 W: 593, D: 370



**NOVELTY+  
BIG**

H: 1225, W: 593, D: 370



**NOVELTY+  
BIG**

H: 1225, W: 593, D: 370



**NOVELTY  
SHOE RACK  
BIG**

H: 1225, W: 593, D: 370



**NOVELTY  
SHOE RACK  
COMPACT**

H: 636 W: 593, D: 370



**MAPLE  
MULTIPURPOSE  
RACK**

H: 400, W: 595, D: 200





**NOVELTY  
TRIPLEX**

H: 1467, W: 593, D: 351



**NOVELTY  
DUAL**

H: 871, W: 593, D: 351



**CANTON  
CABINET**

H: 1760, W: 717 D: 525



CLOSE



OPEN



**LOCKER SLOT**

**CLOAK  
LOCKER**

H: 1400, W: 1160, D: 555



**CUBOID**  
**3 DRAWER**

H: 580, W: 365, D: 375



**CUBOID**  
**4 DRAWER**

H: 765, W: 365, D: 375



**ORGANISER**  
**3 DRAWER**

H: 650, W: 335, D: 425



**ORGANISER**  
**4 DRAWER**

H: 850, W: 335, D: 425



**IDEA**

H: 250, W: 265, D: 345



**STOREWELL**

H: 695, W: 380, D: 430



### IMPERIAL I

H: 690, W: 260, D: 350



### IMPERIAL II

H: 690, W: 260, D: 350



### CELLER 2 DRAWER

H: 448, W: 378, D: 392



### CELLER 3 DRAWER

H: 660, W: 378, D: 392





**LAUNDRY  
BIN**



**SITTING  
STOOL**



**CENTRE  
TABLE**



**ODDY  
STOOL  
WITH  
STORAGE**

Dia: 350 H: 435



**KLEENO**  
by cello

**CLEAN  
COMMUNITIES  
CREATE HEALTHY  
CITIZENS**







**CDB120 (120 L)**

L: 555, W: 485, H: 970



**CDB240 (240 L)**

L: 745, W: 585, H: 1090



**CDB60 (60 L)**

L: 420, W: 420, H: 900



**CDB80 (80 L)**

L: 475, W: 475, H: 900



**CDB110 (110 L)**

L: 530, W: 530, H: 940



**MR. CLEAN  
PEDAL DUSTBIN (60L)**

L: 440, W: 390, H: 662

APPROX



**PADDLER (50L)**

L: 450, W: 380, H: 637

APPROX



**KLEENEX (48L)**

L: 415, W: 296, H: 635

APPROX

**DUO  
WET & DRY BIN (35L)**

L: 400, W: 310, H: 505

**DUO  
WET & DRY BIN (20L)**

L: 315, W: 290, H: 415



(20L)



(35L)

- Easy for segregation at source



### CDB10 (10 L)

Dia 280, H: 305 mm



### NANO MULTI PURPOSE BIN (0.7L)

Dia : 100, H: 200



### MARBELLA SWING BIN (10.2 L)

L: 205, W: 195, H: 375



### PEDAL BIN WITH GARBAGE BUCKET

	Top Dia	Bottom Dia	Height	Capacity
Small Garbage Bucket	270	195	230	6
Medium Garbage Bucket	320	230	270	9.6
Big Garbage Bucket	370	260	320	13.8



### TUFF DUSTBIN GARBAGE BUCKET WITH SWING LID

	Top Dia	Bottom Dia	Height	Capacity
Tuff Dustbin 30 Ltr	270	250	575	30
Tuff Dustbin 40 Ltr	290	275	610	40
Tuff Dustbin 60 Ltr	335	310	720	60
Tuff Dustbin 80 Ltr	350	320	795	80

**H.O:** Cello House, Corporate Avenue 'B' Wing, 1st Floor,  
Senawala Road, Goregaon (E), Mumbai - 400 063.  
Tel: + 91 - 22 - 2686 3426/27, 2686 4630. Fax: + 91 - 22 - 2686 - 3681  
Email: [wimplast@celloworld.com](mailto:wimplast@celloworld.com)  
Email : [wastemanagement@celloworld.com](mailto:wastemanagement@celloworld.com)

**WEST ZONE :** Registered Office & Works  
Unit 3 : S. No. 324/4-7, Swami Narayan Gurukul Road,  
Off Kachigam, Village Kachigam,  
Nani Daman, Daman - 396210.  
Works : Unit 1 : S. No 327/1 - 4 8L 7A, Kachigam,  
Chala Road, Village Kachigam, Somnath, Daman -396210.  
Tel : +91- 9377283459 E-mail : [wimplast.daman@celloworld.com](mailto:wimplast.daman@celloworld.com)  
Pardi Unit :  
Survey No. 39/2/P1, 42/1 +2+3,  
Paria - Dashwada Road, Village - Paria, Taluka - Pardi,  
Dist/ Valsad, Gujarat- 396145 | Mob : + 91 7622919777  
E-mail : [wimplast.pardi@celloworld.com](mailto:wimplast.pardi@celloworld.com)  
Jodhpur Depot : 9352 668008 / 9314 348600 / 9314 219291

**NORTH ZONE :** Haridwar Unit  
Plot No.34, Industrial Park-4,  
Village Begampur, Old Rurkee Road, Uttarakhand,  
Haridwar - 249 403. Tel: +91 - 9319875983  
E-mail : [wimplast.haridwar@celloworld.com](mailto:wimplast.haridwar@celloworld.com)  
Ambala Depot : Tel : + 91-9896411300/ 9310868214/93168 44773

**EAST ZONE :** Kolkata Unit  
Plot No. A/2, Rishi Bankim Ind. Estate,  
24 Parganas (North) Naihati, Kolkata,  
West Bengal -743135 Mob : +91-9433012685;  
E-mail : [wimplast.kolkata@celloworld.com](mailto:wimplast.kolkata@celloworld.com)  
Patna Depot : +91 - 99340 11460 / 9431012442  
Guwahati Depot :+91 - 94353 66693  
Cuttack : + 91 - 8847 861652, 9778020000

**SOUTH ZONE :** Chennai Unit  
A/13, E/S1, SIPCOT Industrial Estate,  
Pappankuppam Village, Thiruvallur  
Dist. Gummidipoondi, Chennai - 601201  
Tel : +91-44-27924050. Mob : +91 9025128301  
E-mail : [wimplast.chennai@celloworld.com](mailto:wimplast.chennai@celloworld.com)  
Hyderabad Depot : + 91 - 93913 38409  
Bengaluru Depot : + 91 - 08023715500

